

XJTLU

Chasing Your Dream
2019-2020
Undergraduate Student Guide

Undergraduate Student Guide

2019-2020

(English version)



Xi'an Jiaotong-Liverpool University

西交利物浦大學



PRESENTS

XI'AN JIAOTONG-LIVERPOOL UNIVERSITY
STUDENT AFFAIRS OFFICE
STUDENT DEVELOPMENT ADVICE CENTRE

CHIEF EDITOR

QIU XINYAN

PROOFREADER

LU CHI, WANG HAO

EDITORS

ZHU LIHONG, MENG YUXIANG

SPECIAL THANKS GO TO

ONE-STOP STUDENT SERVICE CENTRE, BUDDY PROGRAMME, STUDENT COUNSELLING CENTRE, STUDENT ORGANIZATION SUPPORT TEAM, ACCOMMODATION SUPPORT TEAM, ART EDUCATION CENTRE, PHYSICAL EDUCATION CENTRE, LIBRARY, CENTRE FOR ACADEMIC AFFAIRS, STUDENT ADMISSIONS AND CAREER DEVELOPMENT OFFICE, ALUMNI AFFAIRS TEAM, HEALTH AND SAFETY AFFAIRS OFFICE, MANAGEMENT INFORMATION TECHNOLOGY AND SYSTEM OFFICE, UNIVERSITY MARKETING AND COMMUNICATIONS OFFICE, INSTITUTE OF LEADERSHIP & EDUCATIONAL ADVANCED DEVELOPMENT, ZHU XIYE, XIE QIJIAN, LIU SIQING, CHEN XIAOXIAO, WANG XIAOJUE, HAN YULAN, JI HONGJUN

TABLE OF CONTENTS

01-04

MESSAGES FROM
YOUR PRESIDENTS

05-13

2019 PRE-DEPARTURE
BRIEFING

15-16

FRESHMEN TASKS

17-18

THE IMPORTANT
DATES

19-23

EDUCATION MODE

24-26

LIVE IN XJTLU

27-32

STUDENT SERVICE

33-45

ACADEMIC SUPPORT

46

APPENDIX

MESSAGES FROM YOUR PRESIDENTS



Dear Students,

Welcome to Xi'an Jiaotong-Liverpool University. At XJTLU, we regard every student as a young adult. We encourage you to bravely stand on your own feet and actively confront challenges.

For example, you need to adopt an active approach to learning; develop a balance between your academic and extracurricular activities; get along with your roommates and classmates, and spend your time as productively as possible – avoiding bad habits such as spending too much time playing online games. Meanwhile, you are required to be responsible for yourself, for your family, and for society. Such challenges may be painful, but they help you to mature and contribute to society.

The core ideology of the University is 'a happy life and a successful career,' and the aim of the University is to cultivate global citizens with international perspectives and competencies. The fulfilment of this ideology and these goals depends on the development of various capabilities and the improvement of our philosophy and values. To achieve this, the University has developed a unique five-star education model which reflects the latest trends in global higher education and absorbs the essences of Eastern and Western wisdom, culture, and education systems. Furthermore, the University follows a student development-oriented, interest-driven, and learning-centred educational philosophy.

When you graduate, the two diplomas you will receive – one from China and one from the United Kingdom – are just a by-product of learning at the University. What you truly receive are skills you will use for the rest of your life. XJTLU's international learning environment and educational resources will enable you to be a lifelong learner, capable of integrating and applying knowledge and using executive skills to solve problems in an innovative manner.

After many years of exam-oriented education, being sheltered by your parents, and being spoon-fed by your teachers, you may be accustomed to a passive approach to learning. Such an approach requires you to listen to teachers, memorise knowledge points, and focus on exams, all of which are counter-productive to the training and development of capabilities you will need to become successful in the future.

However, to meet the increasingly complex and serious challenges the modern world presents, you must first become an active learner and then a research-led learner. You must learn to challenge your teachers, question existing knowledge, interact with other students and teachers in class, and actively participate in a wide range of innovative activities and practices. You must adapt to diversified learning and teaching modes; actively use the tutoring and mentoring systems, opportunities and resources

provided by the University; and get help from our excellent One-Stop Student Service Centre when necessary.

After its founding, 'XJTLU 1.0' established an innovative education model for international specialised elites by integrating the best teaching practices from across the globe – the American system's flexibility, the UK system's quality assurance, and the Chinese system's emphasis on a solid academic foundation. Under this model, graduates from 10 cohorts have already demonstrated great success in society. Through their achievements, they confirmed the feasibility and efficacy of the model.

But in the face of the challenges of artificial intelligence and robotics, XJTLU also looks to the future. To optimize the education model for international specialised elites, we have created a new model for higher education coined 'Syntegrative Education' (SE). This new model will cultivate the international industry elites who can stand on the shoulders of artificial intelligence and robotics to lead future industries. With SE, the University will explore a new concept for universities and a new model for campuses. To better explore this new model in higher education, with the strong support of the Taicang Municipal Government and Suzhou Municipal Government, we launched XJTLU Entrepreneur College (Taicang), with construction beginning in the first half of 2019.

XJTLU Entrepreneur College (Taicang) will set up six Industry Schools including the School of Artificial Intelligence and Advanced Computing, School of Intelligent Robotics, School of Internet of Things, School of Intelligent Manufacturing Ecosystem, School of Industrial and Financial Integration, and the School of Cultural Technology. Each school will offer its own programme, and recruitment started this year. We are confident that this future-oriented and ground-breaking 'XJTLU 2.0' will bring you even more rich and outstanding educational resources and learning experiences, laying a solid foundation for this crucial stage of your growth.

There are currently three forms of SE. The first is Industry Enterprise Tailored Education (SE-IETE), which aims to provide industry knowledge to XJTLU students and cultivate their practical skills. The second is the Entrepreneurship College (SE-EC) in Taicang, which seeks to develop high-end talents and

leaders guiding future industries. The third is the Innovation Entrepreneurship Community (SE-IEC), a model developed jointly with local governments and enterprises to support interest-led, lifelong learning and to promote innovation and entrepreneurship for students and graduates.

Here are examples of how SE can help you:

SE-IETE

As an XJTLU student, no matter what major you choose, you may be able to take an IETE mini-semester during the three-month summer vacation after your freshman year to develop skills in your industry of interest. During this time, you would take courses designed jointly between XJTLU and one of the companies with which we have signed a cooperative agreement.

In the second summer term in the following year, you may be able to formally enter the IETE program. At this stage, you may be able to take courses taught jointly by industry experts and XJTLU staff, deepening your industry expertise and gaining on-the-ground experience working in an authentic entrepreneurial setting. In your third summer term, you can complete an internship and practice programme. Such an experience will not only enhance your comprehensive capabilities, but also help you better understand the development of the industry and your own professional positioning, improving the effectiveness of specialised learning.

When you prepare your Final Year Project in your fourth year of university study, you may be able to engage in deeper research on a practical issue in industry, with guidance potentially from both an XJTLU academic and an industry expert. If you pursue a research project with a great deal of promise, it could propel you on your career path well after graduation.

When graduation time arrives, two opportunities will await you. You may choose to continue on the path that your academic career has set out for you, or you may choose to launch a career path within the company. After three years of working with you, you and the company will know each other well, and you may find yourself in a very influential starting position. Even after graduation, XJTLU's SE program can help you develop your career. According to our agreement with our company partners, after being

hired, you could return to XJTLU for an on-the-job masters degree that includes both study and training. Unlike a typical masters degree, you would work on behalf of the company and thus gain a well-rounded education blending theory and practice.

This study and work experience could catapult you to a senior level following the completion of your masters degree. So, while your peers from other universities are submitting their resumes for entry-level positions, you could be under consideration for a leadership role.

SE-EC

Our XJTLU Entrepreneur College (Taicang) takes the ideas of SE-IETE even further. The SE-EC adopts a '1+3+2+X' training approach:

- 1 - Year One is general education at our Suzhou campus
- 3 - The next three years are syntegrative education and training at XJTLU Entrepreneur College (Taicang) integrating specialised, industry-based, entrepreneurial, and leadership education
- 2 - After being employed, you can return to the XJTLU Entrepreneur College (Taicang) to a take a two-year, on-the-job postgraduate programme for employer-demanded projects
- X - In addition, we also provide multiple (X) study abroad opportunities for you during your studies

Fully leveraging the resources of leading companies in the industry, the SE-EC combines classroom learning with internships, on-the-job training, and entrepreneurship exploration, and offers syntegrative education which fulfils real-world expectations and demands. This education model will greatly enhance your learning, research, innovation and entrepreneurship abilities, as well as your adaptability and competitiveness. Naturally, you will be more likely to become the leaders of future industries.

It is my sincere hope that your participation in our new SE education model – which builds on our existing education model for international specialized elites to meet future demands and trends – will bring you lifelong benefits, as well as promote social transformation and the advancement of civilisation.

A final word: This University provides you with a supportive platform for becoming a responsible adult, to realise your potential, to explore your passions, and to embrace the future. Your education here will benefit your whole life as you move from kids to young adults and then to mature global citizens, from passive learning to active learning and then research-led learning, from aimless study to interest-driven study and then to a life plan. At XJTLU, the more active you are, the more you will achieve.

We welcome our new students and hope you have a life-changing experience at XJTLU.



PROFESSOR YOUMIN XI

**EXECUTIVE PRESIDENT, XI'AN JIAOTONG-LIVERPOOL UNIVERSITY
PRO-VICE-CHANCELLOR, UNIVERSITY OF LIVERPOOL**



Dear Students,

Welcome to Xi'an Jiaotong-Liverpool University (XJTU).

Joining XJTU is the start of a new journey. With curiosity and expectations, you may be asking: what is a university? What can a university do for me and for society? My answer is this: a university is a place that simulates your curiosity, your passion and your thirst for knowledge. It is a place where you can find the courage to spread your wings to chase your dreams.



In the era of globalisation, digitisation and artificial intelligence, you must establish a rigorous approach to learning that becomes a lifestyle. Strive to learn extensively, inquire thoroughly, ponder carefully, discriminate clearly and practice devotedly.

At XJTU, we will help you gain comprehensive skills and abilities that ensure you will enter society at the end of your time with us as a responsible and innovative global citizen. Only then will you be able to meet the increasingly complex and serious challenges in the world and survive the uncertain and unpredictable future.

During your time here, you can assess your growth against the following:

- **Knowledge:** be able to integrate disciplinary knowledge and general knowledge, and combine the depth and breadth of knowledge, in a number of areas including natural sciences, social sciences, philosophy, literature and art.
- **Capability:** improve oral and writing skills in both Chinese and English, and enhance critical thinking, aesthetic appreciation, quantitative and qualitative reasoning ability, historical thinking ability and scientific analysis ability.
- **Responsibility:** improve self-management and social responsibility; enhance ethical and moral sense; develop cross-cultural, inter-ethnic understanding and cognitive skills; be tolerant, generous, charitable, compassionate and grateful.
- **Personality:** be active and positive; maintain curiosity and keep an open mind; adapt to diverse and changing cultural environments; and find the inner strength to deal with challenges and opportunities.
- **Behaviour:** apply knowledge to practical situations and be willing to take responsibility; cultivate a spirit of self-confidence, self-reliance and a desire for self-improvement; form creative awareness and thinking, foster innovative ability and habits, and become an innovative talent with a growth mindset.

PROFESSOR QIULING CHAO

VICE PRESIDENT, XI'AN JIAOTONG LIVERPOOL UNIVERSITY



2019

PRE-DEPARTURE BRIEFING

NEW STUDENTS REGISTRATION ARRANGEMENTS

PART I: REGISTRATION OF PRE-ARRIVAL SYSTEM

RECEIVING ADMISSION LETTER	Please login to the Pre-Arrival System to complete the pre-induction and registration. (Please refer to “Guide for XJTLU Pre-Arrival System” on page 7)
BY AUGUST 9TH	Please login to “XJTLU Fee Payment Platform” to completed payment. (Please refer to “Payment Guide 2019/2020”&“Pre-Arrival”- “ Payment instruction”)
COMMENCING AUGUST 22TH	Students who have successfully completed payment will find their class information, student development advisor, campus map and more on the “Pre-Arrival System”-“Registration Guide part”.

PART II: REGISTRATION, OPENING CEREMONY AND INDUCTION

AUGUST 24TH 8:30-17:00	New Students Registration Venue: Dorm area (Refer to “Pre-Arrival”-“Registration Guide”-“Campus Map” & “Accommodation Check-in”)
AUGUST 25TH, MORNING	Opening Ceremony (Refer to “Pre-Arrival”-“Registration Guide” -“Opening Ceremony”)
AUGUST 25TH, AFTERNOON	Freshman Information Session (Refer to “Pre-Arrival”-“Registration Guide”-“Freshman Information Session”)
	Academic Programme Information Session (Refer to “Pre-Arrival”-“Registration Guide”-“Academic Programme Information Session”)
COMMENCING AUGUST 28TH	Induction (Refer to “Pre-Arrival”-“Registration Guide”-“Induction Schedule”)

NOTICES

- In the event that you are not able to register on time, please e-mail to onestop@xjtlu.edu.cn in advance. Students who fail to register on time without informing XJTLU in advance will be considered to have given up the opportunity to study at XJTLU.
- Should you have any queries, please contact the One-Stop Student Service Centre from Monday to Friday, 9:00a.m. -17:00p.m. (Tel.:0512-88161854; E-mail: onestop@xjtlu.edu.cn)
- Please follow us on WeChat and Microblog for any latest information.



XJTLU Student Service WeChat



SA - Office Weibo

GUIDE FOR XJTLU PRE-ARRIVAL SYSTEM

The XJTLU Pre-Arrival System is the first step for freshmen, where they have the chance to learn about the unique culture, ideas and service philosophy of XJTLU. You can also complete the registration procedure and view your check-list conveniently.

Please start your journey at XJTLU by carefully reading and following the instructions below.

SPECIAL TIPS

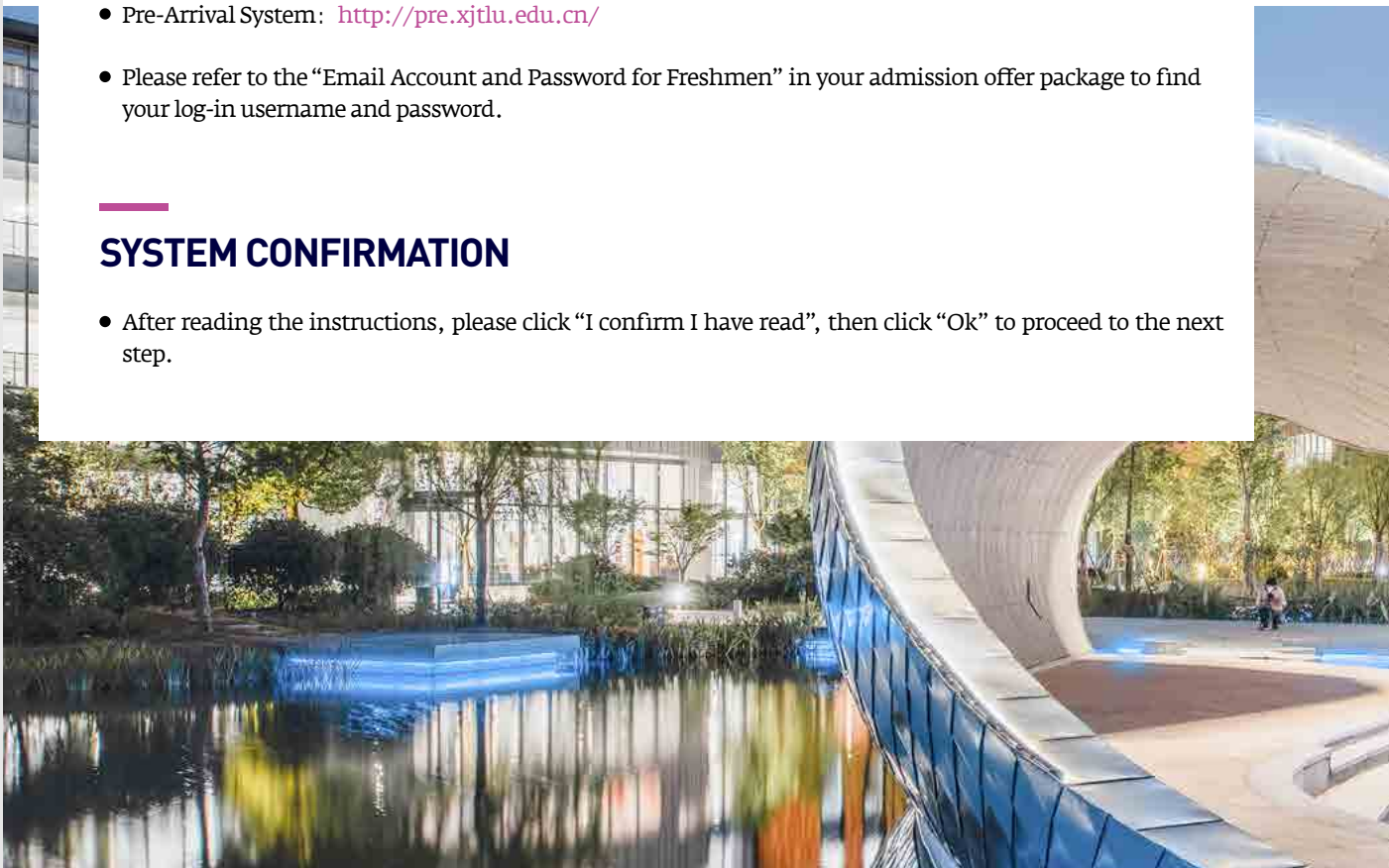
- After completing all the tasks on the Pre-Arrival System, you will receive detailed registration information. Please make sure that you finish all the tasks before you arrive at the university.
- Some of the information involves your family members. Make sure that your family members are aware of that before you fill in the information.
- Considering the large amount of information required, the system will save your data automatically in case you don't have time to finish. You can continue with the registration later.

SYSTEM -LOG IN

- Pre-Arrival System: <http://pre.xjtlu.edu.cn/>
- Please refer to the “Email Account and Password for Freshmen” in your admission offer package to find your log-in username and password.

SYSTEM CONFIRMATION

- After reading the instructions, please click “I confirm I have read”, then click “Ok” to proceed to the next step.



REGISTRATION PROCEDURE

- The registration procedure of this system includes: pre-induction, registration, payment instruction and registration information. Please complete all the procedures step by step.

PRE-INDUCTION

- A** Click “Start Learning” to enter the pre-induction page.
-
- B** Click the name or the logo of the course to enter the learning page (when you finish a course, click “only show unfinished courses” at the top right corner of the screen to find the unlearned courses).
-
- C** “After you enter the course learning page, please follow the page prompts to finish study, and click “next course” to the next chapter (you can also choose courses from the course navigation at the top right corner of the screen).
-
- D** After you finish reviewing all the courses, click “finish” and then click “Ok” on the pop-out window to finish pre-induction.

PAYMENT INSTRUCTION

- A** After registration, you will enter the payment platform to complete payment.
-
- B** Click “read payment instruction” to see the payment procedure, time and notice.

REGISTRATION

- A** Proceed to Registration after you finish pre-induction.
-
- B** Click “Filling in personal information” to enter the page of “Statement of student information sharing form”. Fill in the form and click “submit” (Students who have already filled in this form can move to the next step directly).
-
- C** After submission, the system will automatically lead you to the e-Bridge system. After completing the registration on e-Bridge, you will see the following notice on the screen “Check your status on the system in one hour”.
-
- D** The system will synchronize students’ registration information within one hour and update the status.

REGISTRATION GUIDANCE

The contents of your Registration Guide will be varied according to your payment status.

- A** If you have successfully paid your tuition fee, you will have access to the information of your classes, development advisor, accommodation, University Opening Ceremony, schedule of induction week, traffic, and hotel. Please print it out if necessary.
-
- B** If you have not successfully paid your tuition fee, you will still have access to the information on the Instruction of Payment on site, University Opening Ceremony, your classes, development advisor, traffic, and hotel. Please print it out if necessary.

PAYMENT GUIDE 2019/2020

ITEM	AMOUNT	REMARKS
TUITION FEES	RMB 88,000	Teaching and Learning Expenses
ACCOMMODATION FEES	RMB 2,200	Fees will be collected on behalf of the SEIP Management Office of Student Accommodation
SERVICE CHARGE		
Note: All service expenses will be deducted from the students' service charge accounts, and these accounts will be settled by the end of each academic year. If expenses are less than RMB 2,000, all remaining money will be refunded.	RMB 2,000	<ul style="list-style-type: none"> • Textbook Fees • Military Training Uniform Fees: (Collection on behalf of uniform suppliers): RMB 125 • Insurance Expenses: RMB 143 (This may fluctuate with the government's policy. If the actual cost is less than RMB 143, XJTU will refund any overpayment.) • Other fees: including self-printing fees, ID card replacement fee, Library book overdue fines etc.

NOTICES

- The total payment amount is RMB 92,200.
- Please log in to "XJTU Fee Payment Platform" to finish the payment no later than August 9th.
- Please log in the Pre-arrival system to find the Operational manual of "XJTU Online Payment Platform" and please contact with Finance office at 0512-88161025 if necessary.



ACCOMMODATION CHECK-IN

THE FLOWCHART BELOW ILLUSTRATES THE CHECK-IN PROCEDURES.



Zhi Hui Hu Wechat

ONLINE REGISTRATION

Please log in to the website <http://2019.215123.cn> or add the Wechat Official WeChat Zhi Hui Hu from 9:00 of August 20 to 12:00 of August 22, 2019, to complete the online dorm procedures (pay the room deposit and sign the room rental agreement online). Consultation: 0512-62921890 (Mon. to Fri. 9:00-12:00 & 13:30-17:00)

ONSITE REGISTRATION

Please take your Identification Card and the Admission Letter to collect your room keys and the deposit receipt from the reception desks during 8:30-17:00 on August 24, 2019.

TIPS AFTER CHECK-IN

Please contact the Dormitory Property Management Offices (Wen Xing 0512-88852922 or Wen Hui 0512-62952612) if you find any missing or damaged facilities after you check in to your room.

NOTICES

- Bed size: out diameter 2m×1m (and inner diameter about 1.9m* 0.9m). **Students need to bring their own bedding or can purchase reasonably priced bedding from nearby supermarkets or shopping malls.**
- Please contact the Property Management Offices within one week after check-in if you find any missing or broken facilities. After one week, it will be acknowledged that the facilities are in good condition.
- You are suggested to read through the content of the Accommodation Agreement on the system carefully before you sign the online room agreement.
- After check-in, please protect the dormitory facilities. For any missing or damaged facilities as a result of human negligence, residents will need to pay compensation according to the Accommodation Agreement which was signed when check in.
- After check-in, you are required to comply with the rules and regulations of the Student Accommodation Management Regulations of Suzhou Dushu Lake Science & Education Development District, enhance self-management, improve self-protection awareness and actively participate in the establishment of a harmonious life environment.

HOUSEHOLD TRANSFER

WHO NEEDS TO TRANSFER THEIR HOUSEHOLD REGISTRATION?

If you are a Suzhou urban resident (including the county-level city), you do not need transfer your household registration. If you are from any other area, residence registration transfer is done on a voluntary basis.

WHAT DOCUMENTS DO I NEED?

You need to prepare 3 documents: Offer Letter, Booklet of Household Registration, and your Identification Card. Please take these three documents to your local police station where your residence is registered to process the transfer application.

WHAT ADDRESS WILL MY HOUSEHOLD BE TRANSFERRED TO?

Xi'an Jiaotong-Liverpool University, No. 111, Ren'ai Road, Suzhou Industrial Park.

WHAT SHOULD I DO IF "SUZHOU INDUSTRIAL PARK" CANNOT BE FOUND IN THE LOCAL HOUSEHOLD REGISTRATION SYSTEM?

Please choose "Suzhou Municipal District" instead.

WHEN AND WHERE SHALL I SUBMIT THE HOUSEHOLD TRANSFER LETTER?

After getting the household transfer letter from the local police station, please submit it to the university according to the timetable listed on the Pre-Arrival System and please write down the below information at the upper right corner when submitting : student ID number, name, height, your phone number and your parents' names and phone numbers.





TRANSPORT AND ARRIVAL

BY AIR

SHANGHAI PUDONG AIRPORT	If you arrive at Shanghai Pudong Airport, please take the airport shuttle bus and get off at “Suzhou Industrial Park Stop”, and then take a taxi to XJTU.
SHANGHAI HONGQIAO AIRPORT	If you arrive at Shanghai Hongqiao Airport, you can take the high-speed train from Hongqiao Railway Station to “Suzhou Railway Station” or “Suzhou SIP Railway Station (Suzhou Yuan Qu Station)”. Alternatively, you can take the airport shuttle bus and get off at “Suzhou Industrial Park Stop”, then take a taxi to XJTU.
WUXI SUNAN INTERNATIONAL AIRPORT	If you arrive at Wuxi Sunan International Airport, please take the airport shuttle bus to “Suzhou terminal division”, then take a taxi to XJTU.

BY TRAIN

METRO	You can take Metro line 2 and get off at Songtaojie Station if you arrive at Suzhou Railway Station and Suzhoubei Railway Station .
TAXI	you can take a taxi from all the railway stations to XJTU directly.
BUSES	<ul style="list-style-type: none">• you can take Express No.2 from Suzhou Railway Station to “Xi Jiao Da Stop”• Bus No.115 from Suzhou Industrial Park Railway Station to “Ren da guo ji xue yuan dong”.• There is no direct bus from the Suzhou North Railway Station to XJTU.

BY COACH

SUZHOU SOUTH BUS STATION	You can take Bus No.16 to “Xi Jiao Da Stop” or take a taxi to XJTU.
SUZHOU NORTH BUS STATION	You can take Express No. 2 to “Xi Jiao Da Stop” or take a taxi to XJTU.

2019-2020 ACADEMIC PROGRAMME INFORMATION SESSION

AIM

This year, all new students' parents will be invited to Academic Programme Information Session so that they will have a chance to know more knowledge relevant to the programmes and help the students to make the correct decisions of Programme choice.

TIME AND DATE

14:00pm-17:20pm, August 25th 2019

FORMAT

- Programme presentation at Cluster level for 1 hour
- Q&A

PLAN

• VENUE 1

CLUSTER	PRESENTATION TIME	PRESENTATION LOCATION	LIVE BROADCAST	Q&A TIME	Q&A LOCATION
USCI	14:00pm-15:00pm	G23W of Central Building	FlE, FlW of Foundation Building	14:00pm-17:00pm	Corridor of G floor of Central Building
UBUS	15:00pm-16:00pm				
UMTH	16:00pm-17:00pm				

• VENUE 2

CLUSTER	PRESENTATION TIME	PRESENTATION LOCATION	LIVE BROADCAST	Q&A TIME	Q&A LOCATION
UEEE	14:00pm-15:00pm	G13W of Central Building	2E, 2S, 2W of Foundation Building	14:00pm-17:00pm	Corridor of G floor of Central Building
UBUI	15:00pm-16:00pm				
UFLC	16:00pm-17:20pm				

CHASING

YOUR

DREAM

@XJTLU

FRESHMEN TASKS

DESCRIPTION OF FRESHMEN'S TASKS

In order to help students adapt to the unique culture and principle at XJTLU, and to promote the development of students' self-management, the university has designed many tasks for freshmen throughout the semester to help freshmen grow better. These tasks fall into the following three categories.

A PRE-ARRIVAL TASKS (BEFORE WEEK 0)

TASK REQUIREMENT Accomplish before entering the university

ASSESSMENT METHOD Check on the Pre-arrival system

TASKS FOR FRESHMEN

- 01 **Read the registration guide:** Read the guidance module for registration on the pre-arrival system. Prepare for your registration process in advance and avoid unnecessary waste of time.
- 02 **Emergency contact:** Ask your parents to complete the emergency contact and confirm the completion on the pre-arrival system.
- 03 **Join the local buddy QQ group:** read the Buddy Programme module. Join buddy QQ group and confirm the completion on the pre-arrival system. Chat with senior buddies in advance and greet with your fellow-villagers. Warmth can always make people more powerful.
- 04 **Follow XJTLU official social networking accounts:** In the appendix of the handbook, there are some University important official accounts which can be followed according to your demands and they can help you know the university quickly. At last, confirm the completion on the Pre-arrival system.
- 05 **Pick presents for your roommates:** Show your kindness to your roommates at the first time when you meet. Your gift doesn't have to be expensive, but contains greetings and blessings. After that you need to confirm the completion on the pre-arrival system.

B INDUCTION WEEK TASKS (WEEK 0)

TASK REQUIREMENT Participate in Induction week activities and get familiar with the university life

ASSESSMENT METHOD statistics from volunteers and check-in data

TASKS FOR FRESHMEN

- 01 **Attending the opening ceremony:** According to the email notification, attend the opening ceremony. Please ensure safety and order during the process.
- 02 **Attending Freshmen Information Session:** According to the notice, attend the Freshmen Information Session on time; Note: XJTLU has no class conception and there will be no more class meeting after the first year.
- 03 **Attending Induction week lectures:** Attend the corresponding lectures as required, have a face-to-face talk with the presidents to get a quick understanding of XJTLU Five-star education model and relevant departments.
- 04 **Attending campus tour:** Walk around to view the representative buildings at XJTLU with the guide of your buddies, remember the location of important functional departments, and collect stamps from your buddy at the assigned places.
- 05 **Learn to use tools:** Bind your email address with your personal equipment, practice to use the printer and use ICE to sign in.

C ACADEMIC WEEK TASKS: (WEEK1-WEEK4)

TASK REQUIREMENT Interact positively and show yourself

ASSESSMENT METHOD Click the link of the open-ended questionnaire via ICE system, describe your own story from three aspects (XJTLU culture, interaction with other students, and school life), write stories of your changes.

TASKS FOR FRESHMEN

- 01 **Participate in club activities:** more choices and opportunities to display elegant demeanor, cultivate hobbies and make friends.
- 02 **Interact with international students:** make an international friend, give you an opportunity to know more people, and help international students to integrate into the Chinese environment.
- 03 **Interact with teachers:** Discuss academic issues with your tutor, discuss your major with your academic advisor, and talk about your life with your student development advisor.
- 04 **Interact with your family:** Since you are far away from home now, your family is missing you at home, send your family a postcard on the Mid-Autumn festival.
- 05 **Express your opinion:** Express your “trenchant” comments on Utalk, and discuss with other XJTLUers.

INDUCTION WEEK TASKS

INDUCTION WEEK TASKS

PRIZES XJTLU limited edition of T-shirt, the amount of which is 300. First come first served

PICK-UP TIME AND VENUE Refer to the winning notification email

WIN THE OPPORTUNITY TO HAVE AFTERNOON TEA WITH THE PRESIDENTS AFTER ALL TASKS ARE FINISHED

AFTERNOON TEA WITH THE PRESIDENTS

we will give preference to those students who complete all tasks with high quality

ACTIVITY TIME

pay attention to the email notification, which will be sent probably at the end of the first semester.

THE IMPORTANT DATES

BEFORE 9. AUG

COMPLETE THE FEE PAYMENT



25.AUG

OPENING CEREMONY/
ACADEMIC PROGRAMME
INFORMATION SESSION /
FRESHMEN INFORMATION
SESSION

26.AUG & 27.AUG

ENGLISH ADMISSION TEST



28.AUG - 30.AUG

FRESHMEN MEDICAL TEST



30.SEP - 6.OCT

CHINA'S NATIONAL
HOLIDAY

21.OCT - 25.OCT

MIDTERM EXAMINATIONS



22.AUG

POST THE REGISTRATION
NOTES (ONLINE)

24.AUG

FORMAL
REGISTRATION

28.AUG - 29.AUG

INDUCTION LECTURE



30.AUG

FRESHERS' FAIR

2.SEP-6.SEP

ACADEMIC WEEK

7.SEP - 8.SEP

TEXTBOOK
COLLECTION

23.DEC - 27.DEC

READING WEEK /CHRISTMAS

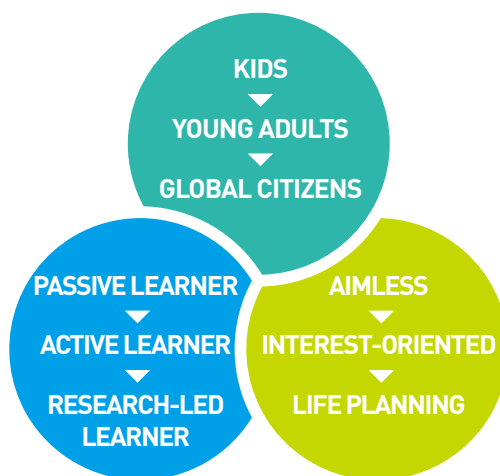
30. DEC - 9.JAN

FINAL EXAMINATIONS

—
**EDUCATION
MODE**



**PRESIDENT XI SAYS
XJTLU HELPS
STUDENTS
ACHIEVE THREE
TRANSFORMATIONS!**



XJTLU FIVE-STAR EDUCATION MODEL

For XJTLU students, the transformation to “young adults” is just the first step. The mission of Xi’an Jiaotong-Liverpool University is to cultivate students to be “global citizens”. One of the core parts of becoming global citizens is to equip themselves with international competitiveness. After constant explorations, XJTLU has put forward three systems, i.e. Philosophy & Value System, Capability System and Knowledge System, which represents students’ development and growth in three dimensions. To achieve this goal, we combine the best of eastern and western educational models, resulting in Comprehensive Education Strategy and Support System of Implementation. Because of the pentagram presentation, the educational model is outlined as “five-star educational model”. (See details below)



FOUR-TUTOR SYSTEM

ACADEMIC ADVISER

How to plan your four-year study and scientific research with your university? To continue to pursue a masters degree or directly enroll onto a joint masters and PhD program? What if you become more interested in other programs? What if you fail your modules? These are the questions most often asked by students who knock on the doors of their academic advisers' offices.



I don't tell students what to do. The first thing to ask is: what do you want to do? The most important issue in higher education is that students must discover themselves so that they can empower themselves and go further.

— Academic Adviser, Department of Biological sciences
Dr. Jian Liu

ACADEMIC ADVISERS -
**“LET STUDENTS EMPOWER THEMSELVES
AND GO FURTHER”.**



STUDENT DEVELOPMENT ADVISER

The international style of the university means that students are welcomed to communicate with their Development Advisers (DA) if they are having any thoughts, concerns or doubts with regard to their life or development. DAs will bring together resources from across the whole university to give appropriate advice and assistance to the students on the basis of respect for and trust in them. Meanwhile, DAs will leave space to students for their free development, rather than excessively interfering into their lives.



What Ms Dong [the student] might not have learned is that behind her gradual adaptation to life in XJTLU and her active completion of the ‘three changes’, there is a professional team providing scientific and systematic support for every step of her growth.

It is our mission to enable students to live independently and healthily and complete the ‘three transformations’.

— Student Development Adviser
Mr. Zilong Wei

STUDENT DEVELOPMENT ADVISERS -
“WE DON'T TEACH; WE EDUCATE”.



BUDDY PROGRAMME

The buddy programme intends to provide timely guidance to freshmen and assist each student in adapting themselves to their university life as soon as possible, by means of peer mutual help and communication with excellent older students.



Alice Averley, an exchange student from Liverpool University felt as though she was a ‘new-born baby’ on her first day in Suzhou due to the language barrier. Luckily, she was provided with buddy support by the university - Yurui Li, a sophomore from Architecture Department became her Big Buddy who says he chose XJTLU because he wanted to get himself integrated into a multi-cultural environment. Taking part in the overseas student buddy programme has given him a terrific opportunity for cross-cultural communication.

BUDDY PROGRAMME:
BRINGING DEVELOPMENTAL OPPORTUNITIES TO EACH OTHER



EXTERNAL MENTOR

The external mentor project is one of the important parts of XJTLU Five-star Education Model. It aims to establish an interactive platform for enterprises, students and university. XJTLU invites senior experts from various fields to serve as the university’s supervisors for students’ future career and life development. They offer a variety of skills and other effective guidance to students to facilitate the knowledge transition from school knowledge to social common sense, as well as to shorten the adaptation period for students from university into the society through the development of a positive attitude and increased capability.



External mentors are like mentors for careers and life planning. Apart from parents and the university, students have very limited contact with the outside world. The greatest value of external mentors is that they open a window to each student.

— Mr. Guangming Wang
General Manager of Medison
External Mentor for 9 years

EXTERNAL MENTOR:
EXTERNAL MENTORS ‘OPEN WINDOWS’ FOR XJTLU STUDENTS



CIETE PROGRAMME INTRODUCTION

The Certificate in Industry and Enterprise Tailored Education (CIETE) is the pilot programme of XJTLU's SE to develop industry elites - syntegrative elites. The programme provides students with an additional educational path during their summers to earn career-competitive qualifications, while developing their skills for continuous learning, integrating and applying knowledge and to develop adaptability.

Students gain cross-disciplinary training and experience, a complexity mindset, strong managerial skills, entrepreneurial skills, and cross-cultural leadership skills.

In the CIETE programme, XJTLU partners with enterprises to integrate and synergise their talents, resources, and practical opportunities, and for both sides to collaborate in designing industrial, management, and leadership training courses. After graduation, students - as syntegrative elites - will be more competitive in entering their selected industry and accelerating their career development.

As an educational programme of advanced and reforming educational thoughts for the innovation and entrepreneur community, the CIETE programme is jointly managed by XJTLU's ILEAD (Institute of Leadership & Education Advanced Development) and IIH (International Innovation Hub).



LIVE IN XJTLU

CAMPUS INTRODUCTION

Before entering the campus, memorizing the name and the English abbreviation of each building can make you feel more familiar when walking around the campus with your Buddy.) Scan the QR code to download the campus E-map: Students can find the hand-drawn map at the XJTLU Museum. You can intuitively experience the architectural composition and planning on north and south campus, and understand the landmark area with our unique campus features and the stories behind it as well.



The following three buildings will be much more related to your campus life:

FOUNDATION BUILDING	Language Centre is located in this building. Almost all the freshman foundation courses will be taken here. In addition, many clubs' activities will be taken place on the lobby of the first floor.
CENTRAL BUILDING	This is the administration building, with the most functional departments located here, such as Library, Museum, Registry, IT Service Centre, One-Stop Student Centre, Student Counselling Centre, Accommodation Service Centre and so on.
PUBLIC BUILDING	This is the place that Student Development Advice Centre is located. If you have any confusion at the beginning of the semester, make an appointment and come to your development advisor's office for consultation.

CAMPUS CAFETERIA

As one of the top universities in Suzhou, XJTLU provides a variety of the campus cafeterias in order to ensure the students' living standard.

LIFE & HOPE REFECTORY — SOUTH CAMPUS	The most popular canteen in campus with the most abundant categories of dishes
PARFAIT SCHOLAR CAFETERIA — SCIENCE BUILDING	Located in Science Building, convenient and fast, the food is fresh and not greasy
YUSHANFANG FAST FOOD — PUBLIC BUILDING	Inexpensive food with high quality, the best choice to save money

HEALTH AND SAFETY

First aid response at XJTU: There is a Pre-hospital Care Room in university.

SERVICE SCOPE	<ul style="list-style-type: none"> • Debridement, sterilizing and dressing for general trauma • First aid on the spot and preliminary treatment of accidental injury
LOCATION	Foundation Building 159
OPENING HOURS	Every Monday, Thursday 9:00-12:00 No permanent duty personnel. Please call the contact person on off-hour
CONTACTS	Ms. Jin
TELEPHONE	0512-81884630

- According to the relevant national professional policies, the condition CANNOT be provided for disease diagnosis and drug treatment.
- First-aid kits are distributed to every Property Management Office, academic departmental secretaries, labs and Health and Safety Officer. All medical supplies are free to use. But NO medicine is provided in the first aid kit. Keep your own medicines with you if necessary.
- Some first-aid equipment such as cervical collar, head holder, stretcher and wheel chair are acquired for public use in the campus.
- If you have any problems or questions about health and safety, raise them to the Health and Safety Affairs Office.

Office location: Center Building, 1103

Contact number: 0512-88161005

E-mail: hsc@xjtu.edu.cn





FOR YOUR SAFETY

BE CAREFUL OF FRAUDS

- Be careful of people approaching you pretending to be teachers, student unions, student associations, or seniors conducting surveys or offering subscriptions.
- Do not give your mobile phone, cash or bank cards to strangers.

BE CAREFUL OF THIEVES

- Don't carry large amounts of cash with you upon your arrival. Please be careful when you set up your bank card pin number.
- Take good care of your personal belongings.

BE AWARE OF FIRE SAFETY

- Follow accommodation rules and regulations strictly; know how to use fire extinguishers.
- Pay attention to traffic safety when you go out.

REMEMBER THESE EIGHT COMMON SCAMS TO AVOID BEING CHEATED.

- Someone claims to be from public security organs and asks for a money transfer.
- Someone requires you to transfer your money to a 'Safety Account'.
- Someone requests a pre-deposit for awards.
- Be cautious of scams requiring you to provide your banking information on unknown websites or links.
- Never give your personal information, bank card information or message security codes to unknown people over the phone.
- Be careful of claims to test your E-bank.
- Please contact your relatives and friends immediately when get messages about incidents involving them.
- Be aware of money transfer requirements from your boss or tutors on the phone.

You are suggested to pay attention to the WeChat Official Account of 'suzhou_Police'.

ACADEMIC SUPPORT

REGISTRY

REGISTRY SERVICES AND SUPPORT

ACADEMIC RECORDS, TRANSCRIPTS AND CERTIFICATES

TRANSFER, SUSPENSION AND WITHDRAWAL

MODULE ENROLMENT AND TIMETABLE

CONTACT REGISTRY

The Registry is responsible for a range of functions in support of the university's core activities of teaching and learning, from managing the data the university holds about students to the academic services for students to support their growth at the university.

Registry uses e-bridge (<https://ebridge.xjtlu.edu.cn>), XJTLU's web-based student information system, to record your personal information and academic records during your study at XJTLU. You can access e-bridge to check your full academic records, including module taking list, module marks, progression results, work placement records, and others. Unofficial transcripts are also available to download.

If you would like to obtain stamped official transcripts and certificates, you need to login to e-bridge and complete the online request form on student academic records page. A confirmation email will be sent to you once your request is submitted successfully. It usually takes five working days to process your request, and you will be notified via email once your documents are ready.

You are expected to complete your undergraduate studies at our university. However, if there are situations where you suffer from health problems or other special difficulties, you may apply to transfer to another university. Details about the procedure of transfer to another university could be sought from Jiangsu department of education website http://jyt.jiangsu.gov.cn/art/2017/12/29/art_38047_7215286.html?xipuxy=bolod3 or consult student academic services team in Registry.

Ideally you can complete your undergraduate studies in four consecutive academic years. However there may be situations where you experience persistent problems with health or personal circumstances which may prevent you from continuing your studies temporarily. Under these circumstances, you may need to apply for suspension of your studies. Before you apply, you should consult your academic adviser, your department, your development adviser, the Registry and your family, and complete the application for suspension of studies form. Student application for suspension of studies shall normally be made before the start of each academic year.

NOTE THAT NORMALLY A THIRD APPLICATION FOR SUSPENSION IS NOT GRANTED. AND THE MAXIMUM REGISTRATION PERIOD IS 8 YEARS WHICH INCLUDES ALL PERIODS OF REPEAT STUDY AND PERIODS OF SUSPENSION OF STUDIES.

We hope you will graduate successfully from the university, but we know that sometimes students have to leave before they complete their studies. Please consult your academic advisor, your department, your development advisor, the Registry and your family if you are thinking of withdrawing. If you decide to do so, you should complete the withdrawal form and submit to the student academic services team of Registry.

The e-bridge system maintains the information of your module enrolment, including compulsory modules required by your programme and the optional modules of your choice. Your personal timetable will be developed based on your finalised module list and published to you on e-bridge before the start of each semester. You will also be enrolled onto your modules on XJTLU's virtual learning environment ice (<http://ice.xjtlu.edu.cn>), the online platform designed to support and enhance learning and teaching. You can access ice anytime, anywhere in order to stay up-to-date with your modules, communicate with teachers, view important learning resources, submit coursework assignments, and so on.

If you have any questions about the services and support provided by Registry, you could contact the student academic services team in Registry, where you may also seek advice and guidance if you have questions about the university policies and procedures or academic regulations in general.

The student academic services team aims to deliver a comprehensive and quality academic service.

Email: academicervices@xjtlu.edu.cn

Office: 8th floor, central building.

Telephone: 0512-88161230

STUDENT GUIDE TO IT SERVICES

MITs (Management Information Technology and Systems Office) is responsible for providing IT service on campus.

ACCOUNT

One account for everyone
 The account contains one unique User ID and an initial password
 You can use this account to log on any campus IT system such as computers, Wi-Fi, E-mail, File server, Library and so on. (To find the links to those systems: <http://guide.xjtlu.edu.cn/>)

LOGGING INTO A COMPUTER ON CAMPUS

- Press “Ctrl+Alt+Del”, the login window will appear.
- Input username and password, and press “Enter” to complete the login process.

EMAIL

The mailbox capacity for student is 1GB. You may view and manage emails via Outlook client or web access (<https://mail.xjtlu.edu.cn/>).

STUDENT ID CARD

The card can also be used to:

- Be a Library card
- Self-Printing
- Pay for buses/subways

WI-FI(WIRELESS NETWORK)

Connect to University's free Wi-Fi network
 Search and connect to the campus wireless SSID (XJTLU) network. Open any web page by browser, and the authentication page will automatically pops up. Please log in with your username and password.

COMPUTER LABS

- All campus PCs operate Microsoft Windows or Mac OS. You can log in as a normal domain user with your unique username and password
- All PCs are connected to the network and you can browse the internet freely
- All computer labs open from 8:30am to 10:00pm every day during the academic semester. During the university holiday, most of the labs will be closed. All students have free access to the labs except if a class, maintenance work, or event is scheduled.
- Please strictly observe the computer laboratory regulations. Do not occupy seats and take food and beverages into the laboratory. All students' belongings in computer labs should be cleaned up by themselves when labs close before 22:00 every day during teaching week. The University takes no responsibility for any loss or damage to items who leave in computer labs.

IT SERVICE CENTER

Location : 956A Central Building
 TEL : 0512-88161250
 Email: IT@xjtlu.edu.cn
 Software Installation Location: Library 4F (Central Building)

LIBRARY

XJTLU Library plays the role of Research Support and Learning Centre in XJTLU by following the latest development trends of top university libraries around the world. The Library develops its collection by focusing on subject development and research requirements. Once shortlisted for the “Oscar Award” for architecture, the whole building is impressive for its design inspired by the “Taihu Stone”. The spatial partition stands for the dependence and integration of knowledge fragments. And the inner see-through spatial design seamlessly connects the practical functions.

Important information that you need to know:

Your University ID Card is also your Library Card; it can be used to enter and exit the library, borrow books, book group study rooms, print, copy and scan documents, as well as for the electronic lockers.

The Library not only provides a huge range of printed resources; including a wide variety of books, magazines and newspapers, but also provides digital resources such as academic journals and e-books, which can all be accessed at <http://lib.xjtlu.edu.cn/>.

Learning Commons, Group Study Rooms, Information Commons, as well as “Mobile Phone Zones” are also accessible in the library. The entire Library has Wi-Fi coverage, and is divided into different zones: “Absolute Quiet Zone”, “Quiet Zone” and “Light Discussion Zone”, to cater to all students’ preferences.

The library not only organizes various activities for students, but also offers a variety of information skills training sessions. You can follow the Library’s WeChat account to keep up with the Library’s activities.

TIPS

- The library is a public area, please watch your belongings and do not leave any belongings unattended. The library is not responsible for any loss or damage of personal belongings left unattended in the library.
- Any personal items left in the Library premises after closing hours will be taken to the 3rd floor Library Service Counter each day without notification.



Library Homepage



Library Wechat



Freshmen Quick Start Guide

WELCOME
TO
XJTLU
LIBRARY

SYSTEM

ICE@XJTLU

ICE is an online platform closely related to your studies where you can log in to keep an eye on the course updates, and search/download important resources and submit assignment. Please note that a few students who didn't access ICE missed the deadline of assignment submission, which seriously affected their studies. Besides, ICE@XJTLU is also made available on mobile App Store so that you can access it anytime, anywhere where you can stay up-to-date with your modules.

The link of this system: <https://ice.xjtlu.edu.cn/login/index.php>

XJTLU APP

XJTLU APP is a uniform and easy way on mobile devices that intended to provide XJTLU staff and students with the means to benefit from accessing to the data produced by a wide range of application systems across the campus.

It is designed to integrate the services rather than generate the data itself to save enormous time for end-users.

You can download it by scanning QR code below.



INTRODUCTION OF E-BRIDGE

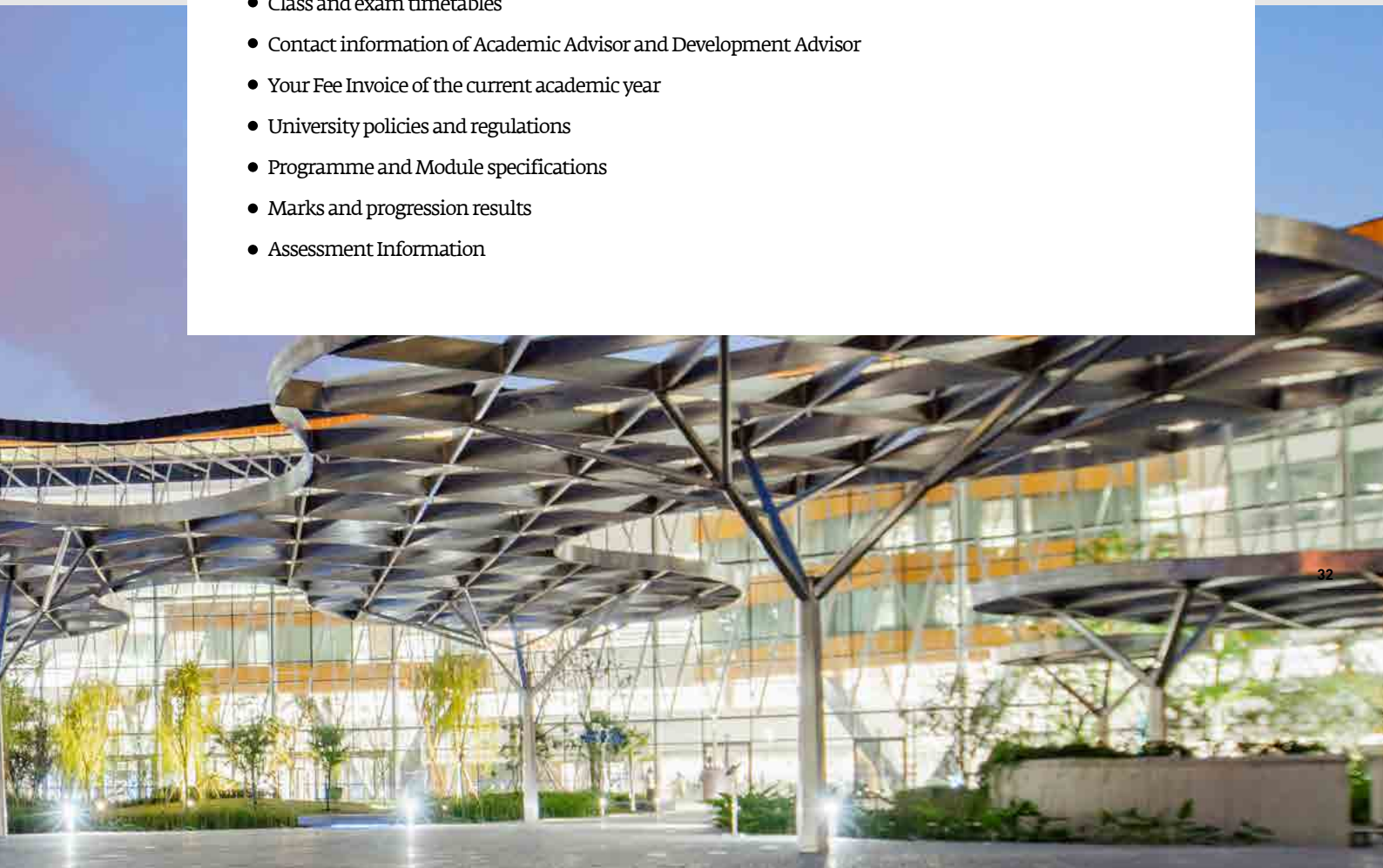
E-Bridge system is the web-based student information system of XJTLU, which is available for students to access and perform a variety of tasks.

WITH E-BRIDGE YOU CAN:

- Complete annual online registration
- Update personal contact information
- Request for transcripts and some certificates
- Choose optional modules
- Apply for programme choice and transfer (in Year 1)
- Apply for 2+2 study route (in Year 2)
- Register for graduation ceremony (in Year 4)

THERE IS ALSO A LOT OF INFORMATION AVAILABLE TO YOU, INCLUDING BUT NOT LIMITED TO:

- Class and exam timetables
- Contact information of Academic Advisor and Development Advisor
- Your Fee Invoice of the current academic year
- University policies and regulations
- Programme and Module specifications
- Marks and progression results
- Assessment Information



STUDENT SERVICE

STUDENT DEVELOPMENT ADVICE CENTRE

By integrating Eastern and Western culture and coordinating global resources, Xi'an Jiaotong-liverpool University (XJTLU) has a campus culture of Diversity, Regulation, Innovation, Freedom and Trust. In order to help domestic students adapt into the international culture of XJTLU and become elites with noble personality, outstanding skills and International competitiveness, Student Development Advice Centre (SDAC) coordinates various resources and provides comprehensive advisory and guidance services for students. It aims at providing effective supports for students as well as helping students achieve personal growth and development.

ADAPTATION AND INTEGRATION

INDIVIDUAL-SPECIFIC ATTENTION

SPECIALIZED SUPPORT

CLASS MANAGEMENT

INFORMATION RELEASE

EMERGENCY HANDLING

DEVELOPMENT ADVISOR TEAM FOR UNDERGRADUATE STUDENTS

As one of the Four-Tutor Systems, Development Advisors focus on guiding students to realize 'Three Transformation' as advisors, coordinating various resources as coordinators and providing specialized supports as experts.

Development Advisors for undergraduate students provide corresponding supports according to different groups of students, including supports for freshmen and senior students. The supports mainly include the following six aspects:

For freshmen adaptation, SDAC cooperates with other student service teams to design and launch Induction Programme for Year 1 students.

For Departmental integration, SDAC cooperates with schools and departments to organize Orientation for students.

Development Advisors pay close attention to general performance of students at university and provide daily supports. Development Advisors also offer specific supports to students with difficulties or risks in life and study such as academic risks, adaptation difficulties and interpersonal relationship problems.

WINGPLUS is a platform coordinating resources from different offices in the university to support the growth and development of students. Students could participate in various support and enhancement programmes in the platform.

Year 1 students are grouped into classes and enjoy a wide variety of activities organized by Development Advisors. Development Advisors support Year 2-4 students by schools and departments after students choose their programmes. The selection and training of class leaders is also a part of class management that contributes to improving the ability of student self-management and peer support.

SDAC is also responsible for releasing information and notice to students, such as the maintenance of students' archives, tips for academic risk, introduction of university resources and suggestions at different learning stages. In addition, Development Advisors help with the daily inquiries of students according to university policies, regulations and general knowledge.

Development Advisors respond to emergency cases according to emergency procedures of the university.

ACTIVITIES AND PROGRAMMES

In order to fulfill the diversified demands of students, SDAC has launched various supporting programmes.

AFTERNOON TEA WITH THE PRESIDENTS

“Afternoon Tea with the Presidents” is the biggest prize for completing all the freshmen tasks in CHASE THE DREAM@XJTLU-the undergraduate student guide. It aims at providing an opportunity for freshmen to communicate with the presidents. It also provides an opportunity for the university to have a better understanding of students’ needs. The freshmen’s tasks include but not limited to sharing plan of the university life with family, independently packing for university, attending opening ceremony and lectures in Induction week, actively learning campus resources and submitting essays of perceptions of first year study in XJTLU.



BOUNCE BACK PROGRAMME

Bounce Back Programme is a programme of habit formation based on psychological and educational theories for the students with difficulties in academic progress and self-management, aiming at helping those students, who struggle with these problems, back to normal life and study.



YOU STOP, WE HELP -- HOW CAN I FIND HELP FROM ONE-STOP?

One-Stop Student Service Centre, the first source for answers on your subsidy scholarship, household, student archive and other non-academic affairs. Make One Stop your first stop! Let's get to know one-stop from the following questions.



STUDENT ONE-STOP

WHAT'S THE ONE-STOP?

Since its establishment in 2009, One-Stop Student Service Centre has been committed to providing excellent services and supports to all students and aims to create an efficient communication channel among students, parents and the university and among various departments within the university.

It covers services like consultation, on-campus affairs and other related issues. Students can find the solutions to most non-academic problems here.

WOULD YOU PLEASE DETAIL THE SERVICES AT ONE-STOP?

Generally speaking, our service is divided into two parts: consultations and applications.

Consultation service accepts any non-academic enquiries related to university. If you are confused or in difficulties, contact us and we can give you initial assistance and refer you to appropriate specialist teams if necessary. You may also refer to FAQs collected by one-stop on office website.

Application services are listed in detail as below.

- Rooms and facilities booking for student organizations
- Medical insurance
- Scholarship application (non-academic)
- Student ID card replacement application
- Student booklet replacement application
- Household transfer application
- Student archive application

Additionally, One-stop receives suggestions and complaints. Any suggestion or complaint will be welcomed and responded timely by us.

HOW CAN I GET ONE-STOP SERVICE?

You may achieve one-stop service by following ways.

On-site: Central Building-115E

Phone: 0512-88161854

E-mail: onestop@xjtlu.edu.cn

Website: <http://studentonestop.xjtlu.edu.cn/>



One-stop in
My Eyes



Scan us to submit
your application

拓展阅读:

FAQs on Official Website: <http://guide.xjtlu.edu.cn/faq-oss.html>

Regulations and Procedures at One-Stop: <http://studentonestop.xjtlu.edu.cn/>

STUDENT COUNSELLING CENTRE (SCC)

In the first year of your university life at XJTLU, you may feel like “It is hard to always remain in contact with the community” “How to easily make friends with others?” “I do not know how to deal with the conflict with my roommate” or “I suddenly feel down today”. In most time, you can handle it alone. If such disturbance continues, cannot be controlled or gotten rid of, and even affects your physical health and daily life, it is time for you to seek mental health counselling for professional help.

WHAT IS MENTAL HEALTH COUNSELLING?

“Walking into a mental health counselling room and talk to a professional counsellor” does not mean that you are diagnosed as a patient with severe mental health problems. The ultimate goal of mental health counselling is to help the individual to recognize and handle emotional distresses in daily life, and promote self-exploration and self-growth. SCC owns the professional on mental health delivering counselling services to maintain mental health safety in the university. On the basis of confidentiality agreement and university counselling settings, mental health counsellors help students to reflect on personal conflict, interpersonal relationship, mental health issue, and stress management etc.

However, mental health counsellors in an university setting is not the same as psychiatrists in a hospital setting. SCC is not allowed to make mental health diagnosis or prescription on medical treatment. There will not be any interesting psychological questionnaires to fill in. Meanwhile, SCC cannot provide long-term counselling service for students with severe mental health problems.

HOW TO MAKE AN APPOINTMENT FOR INDIVIDUAL COUNSELLING?

You can make an appointment for individual counselling via email, phone call, website or in person at our reception. Your pre-counselling session will be arranged as soon as possible after you complete and submit your pre-counselling form. During the session, there will be a chance for you to discuss your counselling expectation with the counsellor.

WHAT WOULD HAPPEN AFTER YOUR APPLICATION?

After you successfully submit your pre-counselling form, you will be invited to attend the pre-counselling session according to the available slots you choose on the form. In the pre-counselling session, you will have a chance to discuss your current issues, your counselling expectation and how counselling works with the counsellor. Certainly, you can bring up your concerns about counselling and make your own decision on whether to require the counselling sessions or not.

If you would like to have the formal individual counselling, you will be arranged to one-to-one short-term counselling for 6 to 8 sessions. Each session normally lasts for 50 minutes with the same counsellor once a week.

You will also have a chance to fill in the evaluation questionnaire to leave any useful feedback, when you and your counsellor both agree to end the counselling relationship. You are always welcomed to make another appointment next time when you need it.



OTHER SERVICES WE PROVIDE

ONLINE ADAPTATION SURVEY FOR FIRST-YEAR STUDENTS

In order to gain better knowledge of adaptability of new students, SCC will invite all first-year students to complete online test, which will also remain confidential.

DROP-IN SESSION

Quick counselling with no appointment needed. If you are not ready for the individual counselling once a week, drop-in session would be a good experience for you. It is more flexible and timely than the individual counselling to deal with emotional distresses. It normally lasts for 30 minutes and you will be listened with empathy and provided with emotional supports.

EMAIL HELPLINE

If you are not ready for counselling in person, you can write down your concerns or issues and send it to us via email. Counsellors will get back to you via email as soon as possible. Scan the QR code in the right side to read some letters we have replied.

PSYCHOLOGY WORKSHOP

SCC will invite professional counsellors outside the university to hold psychology workshops in different topics, such as “Mindfulness and meditation”, “Interpersonal Communication”, “Manage your stress” and “Emotion Lab”, to all students at XJTLU.

For more information,
Please scan the QR code to guide you.



Example Case:

This is a story of adapting to university life.



SCC Website:

Log in using your university account after enrollment to make an appointment. Or know more about our workshops and booklists on psychology and counselling.



Example Letters:

Romantic relationship and friendship in the university life.

STUDENT CLUB AND ORGANIZATION

OVERVIEW OF STUDENT CLUBS AND ORGANIZATIONS

Student Clubs and organizations provide a platform for students' self-management and self-development. Student Club Support Center (SCS) is committed to creating a dynamic and kaleidoscopic campus life and culture for students. Guided by the vision & missions and education model of XJTLU, our student clubs and organizations strive to be internationally unique by featuring interest-driven, learning-centered and development-oriented programs. XJTLU has a total of 158 registered clubs and organizations in 7 categories, including 31 functional organizations, 10 community service clubs, 24 academic clubs, 32 art clubs, 13 recreational clubs, 38 sport clubs and 10 varsities. All of the clubs and organizations recruit new members at fresher's fair during induction week. More detailed information please scan the QR code.

SOCIAL PRACTICE

How to analyze data? How the enterprises work? What is the future of the urban villages? What is the experience of supporting education? What lifestyle do global volunteers have? During the holiday, the student teams are able to find the answers by exploring different areas of the social practice. Social Practice helps students enhance learning ability, innovation ability and sense of social responsibility, it is the first step of being young adults.

WELCOME PARTY

Hosted by the Students Union of XJTLU and co-organized by various student's societies and external merchants, is an annual party featuring the largest scale, the largest number of participants and the greatest influence for welcoming the freshmen. There are dance, singing, magic show, poetry recitation, performance of musical instruments, stage play, etc. Up to now, XJTLU has successfully hosted 13 welcome parties since its establishment in 2006, which have been widely acclaimed by all staff and students.

CONTACT THE STUDENT CLUB SUPPORT CENTRE

Contact the Student Club Support Centre:

Email: scs@xjtlu.edu.cn

Telephone: 0512-88161899

Visit Us: Room 256, Central Building

Official Website: <http://club.xjtlu.edu.cn/>

Wechat Subscription: 西浦 Student Engagement

WIN-X LEADERSHIP TRAINING PROGRAM

WinX-Leadership Training is a program aiming to develop the XJTLU students' leadership skills through projects running within given times. It's designed to have a profound and lasting impact on students, especially the student club leaders, by creating opportunities for them to develop their capabilities and skills in strategic planning, decision making, project executing, etc. and lead them to make more and better contributions to the communities and even change the world.

VOLUNTEER ACADEMY

Volunteer Academy is the official platform which offers support and service to the volunteer activity in XJTLU. Since it was established, it not only helps organize volunteering activities both in school and out of school together, but also provides professional volunteer trainings, services and supports to society. Meanwhile, it holds exchanging meetings regularly in order to advocate the concept of volunteering to society. Students who are interested in volunteer activities can register through the recruitment email sent by SAO and the WeChat Account of the Volunteer Academy to participate in volunteer activities, such as the Opening Ceremony & New Student Registration volunteer and the Jinji Lake Marathon volunteer, etc.



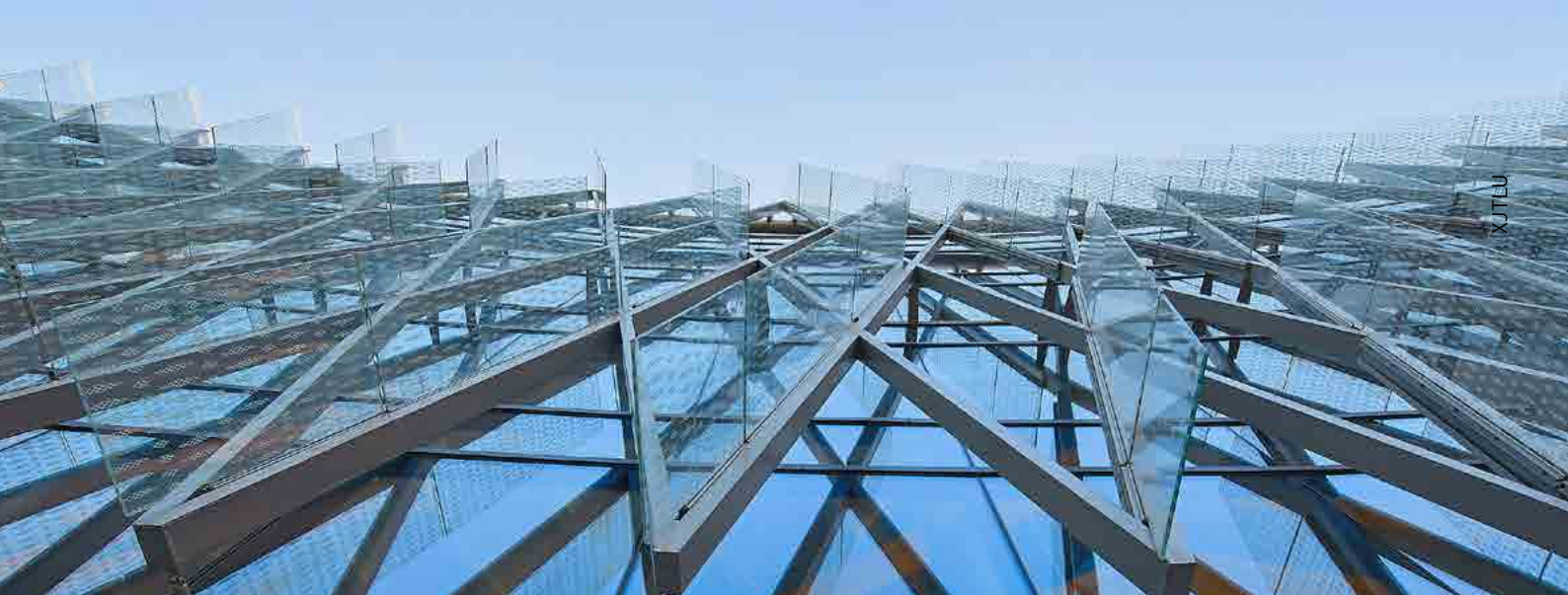
WeChat Subscription of Student Club Support Centre



Website of Club List



WeChat Subscription of the Volunteer Academy

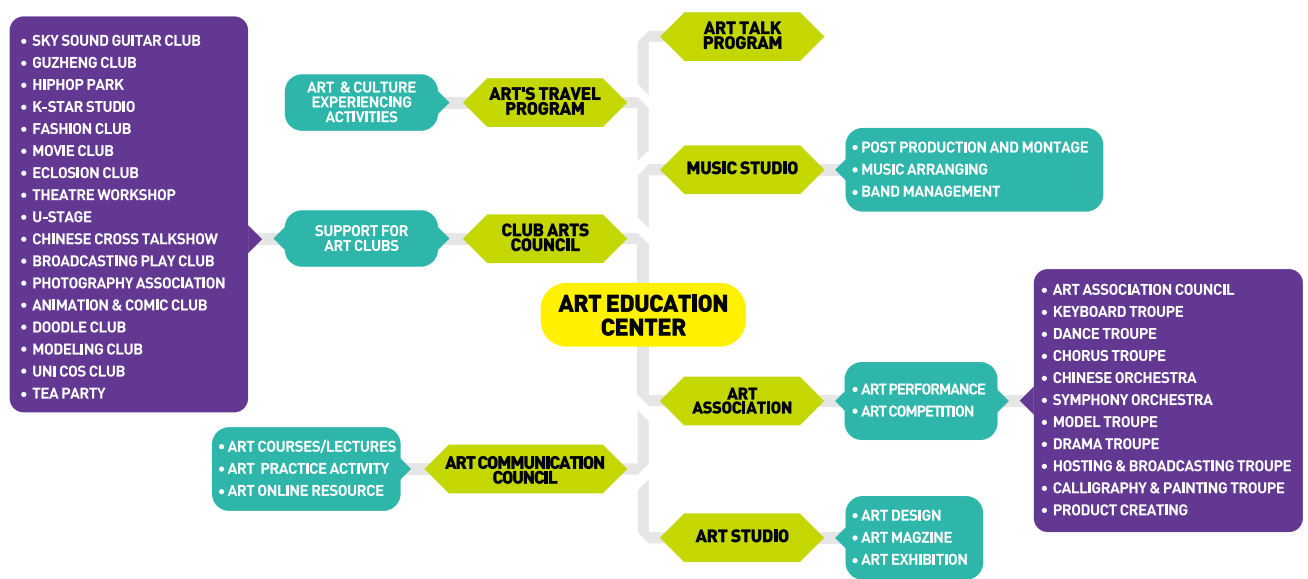


ART CENTRE

AC focuses on the theme “Art Knows No Bound” and carries out a series of art education activities with the guidance and service of teachers, students' initiative and independent innovation. Nowadays, Art Centre includes 7student organizations which are Art Association (including Art Committee, Symphony Orchestra, Chinese Orchestra, Chorus, Dancing Troup, Drama Troup, Keyboard Troup, Designing Troup, Model Troup, Hosting and Broadcasting Troupe and Creative Troupe), Art exchange Centre, Art Society Committee (including Film Club, Photography Club and other 19 clubs), Art Studio, Music Studio, “Arts, Travel” team and Art Talk Program.

AC holds over one hundred artistic activities, initiates over 20 art optional courses and salon, holds 50 art outreach and exchange activities every year, which greatly enriches students’ artistic and cultural life in XJTU. The integration and coexistence of diverse art cultures, the integration and exploration of multi-perspective art culture reflects the innovation of art education in XJTU.

Email: artcenter@xjtu.edu.cn

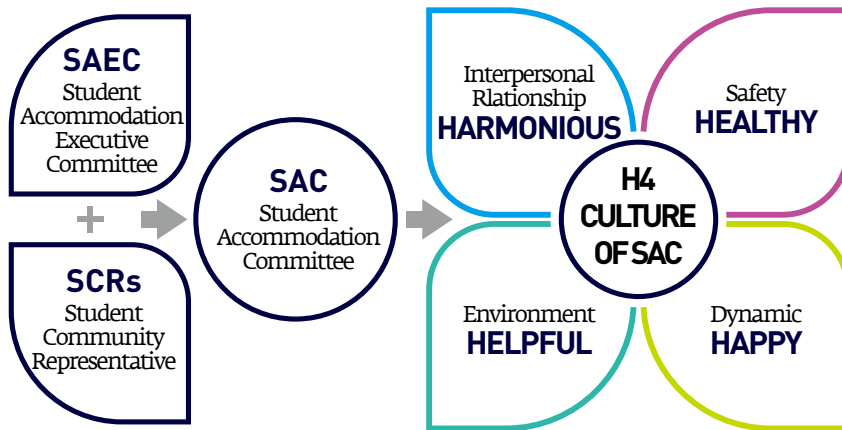


LOCAL STUDENT ACCOMMODATION SUPPORT

Dushu Lake Science & Education Innovation District adopts the socialization management model of student accommodation. Local student dorms were built and managed by Suzhou Dushu Lake Science & Education Development Limited Company which locates at Student Accommodation Areas nearby the campus. Property Management Company is employed by SIPEDI company and offers total services to students in the local dorms. Four undergraduates share one dorm which equips washroom, furniture, air-conditioner, water-heater and others. Room facilities may be a little different as halls were built in different time. The local accommodation resources and services in this town are shared by XJTLU students and students of other universities together.

Student Accommodation Support Team of XJTLU offers daily accommodation consultation and application services to local students. Student Accommodation Committee (SAC) is a student self-governed organization. SAC Service Center provides supports such as dorm consultation, suggestion collection, dorm communications, dorm activities etc. As the bridge connecting students and accommodation suppliers, SAC positively communicates and coordinates with the proprietor and the property management offices to seek better services for schoolmates. For local accommodation support, you are suggested to contact SAST or SAC.

DORM IS MORE A COMMUNITY



CONTACT US

Location: 115E, Central Building
 Tel.: 0512-88161857
 Mail: Accommodation@xjtlu.edu.cn
 Working Time: 9:00-12:00 & 13:00-17:00 Mon. to Fri.





CAREER CENTRE



XJTLU Career Centre provides students with career planning, further study guidance, internship opportunities, innovation and entrepreneurship guidance, external mentor program, graduation dispatch service, etc. in order to open a window for students towards society, to promote students' cognition of society, life and career and to improve students' comprehensive quality and professional competitiveness.

EMPLOYMENT OPTIMIZATION

Career Centre provides students with abundant employment resources to help develop their career interests and abilities. Students are welcome to log in Career Centre official website and WeChat official account to obtain all the information for opening positions and employment activities. Students can also sign up for various types of career activities, such as job fairs, career talks, workshops on resume writing and interview skills, etc.,



CAREER GUIDANCE

Career centre provides sufficient supports during each stage of students' self-development and career planning . Through lectures, workshops, partnering with career counselors, they will benefit from personalized guidance on setting and maintaining career goals, gaining self and industrial awareness, building business networks and making wise career choices. Furthermore, Online Career Evaluation Test helps learn about self-interests, skills, values and personality traits.





EXTERNAL MENTOR PROJECT

Career Centre sets up a unique team — external mentors, to help students gain more insights about industries and life experiences from high level experts.



INNOVATION AND ENTREPRENEURSHIP

Career Centre sticks to the actual needs of university students' innovative undertaking demand as the guidance, encourages and fosters innovation and entrepreneurship, providing students with practice platform to improve entrepreneurial qualities and comprehensive abilities. It also offers incubator support for students' entrepreneur projects to promote the resources integration symbiotic between scientific research, mentors, and local enterprises.



GRADUATE SERVICE

Graduate service is provided with the guidance of “Five-star Education” model of XJTLU and in line with the “student-centered” service tenet. The Hukou & archive dispatch service will be provided to undergraduates, postgraduates and doctoral students from XJTLU at the time of their graduation.



XJTLU ALUMNI ASSOCIATION

XJTLU Alumni Association was founded in August 2010. It is a world-wide nonprofit organization which is made up of XJTLU graduates and has 19 branches. These branches cover 10 areas including Beijing, Shanghai, Hong Kong-Guangdong, Jiangsu, Shanxi, Zhejiang, the UK, Singapore, Canada and Australia and 9 faculties including International Business Suzhou, XJTLU School of Film and TV Arts, Civil Engineering, Computer Science and Software Engineering, Urban Planning and Design, Electrical and Electronic Engineering, Mathematical Sciences, Architecture and China Studies. More and more branches are going to be established in the near future.

The purpose of the XJTLU Alumni Association is to promote the welfare of XJTLU and to establish a mutually beneficial relationship between XJTLU and its alumni. The XJTLU Alumni Association helps alumni connect with the University and with fellow graduates through a wealth of Club activities, continuing education programs, online services, and alumni events around the world. Here, you will gain the experience of alumni's study and employment, the opportunity to communicate with them face to face, chance to participate in colorful alumni activities around the world, and the platform to show and improve yourself.

Wherever you are, XJTLU Alumni Association welcomes all XJTLU alumni to join our global network.

XJTLU ALUMNI ASSOCIATION——SERVICES & SUPPORTS

THE XJTLU ALUMNI CARD

Alumni Card retains most of the functions of Student Card. The new Alumni Card will be upgraded from Suzhou Citizen Card into Jiangsu T-Union from 2019. According to XJTLU policy, alumni can have access to school library and gymnasium with Alumni Card.

THE ALUMNI PERMANENT ACCOUNT

By using the alumni permanent account, you can log in XJTLU Alumni Website, E-bridge, ICE@XJTLU, Career Centre, connect the WIFI (SSID: XJTLU) on the XJTLU campus etc. You will have the permanent alumni e-mail account as well.

CAREER DEVELOPMENT SERVICE

All the members of XJTLU Alumni Association are eligible for the free career development and advice services from XJTLU within 5 years after their graduation. The Career Development Office will help provide dispatch service for Chinese mainland students after graduation.

OTHER SERVICES

Library Service, Further Education Service, Tuition-Waiver, Event Organizing and Supporting Service

ALUMNI ACTIVITIES

XJTLU Alumni Association will hold Alumni Forum, Homecoming Day and Graduation Ball every year. Besides, local alumni branches will organize alumni gathering events and forums regularly as well.



SPORTS CENTRE

XI'AN JIAOTONG-LIVERPOOL UNIVERSITY SPORTS CENTRE

The Sports Centre at Xi'an Jiaotong-Liverpool University is the central agency for the service of the university's sports activities. Our commitment is to provide consistently reliable service in all sports matters and empower lives through sports.

SERVICE

SPORTS CLUBS

The Sports Centre oversees 38 sports clubs and 8 athletic teams with professional guidance and support. Here in XJTLU, students can either choose club sports for recreational purpose or try to enroll in team sports for competitive play.

ACTIVITIES

XJTLU values the lessons that have long been taught by athletic participation: the pursuit of excellence, ethical and responsible behavior, adherence to the rules, leadership and strength of character, and sportsmanship. Sports at XJTLU builds community through the engagement of students, faculty, and staff, and creates a portal through which neighboring communities can enjoy the XJTLU experience.

The Sports Centre organizes brand intramural events, e.g., Freshmen Cup, Football Tournament (5 Aside, 7 Aside), Basketball Tournament (3v3, Yangfang Cup), Sports Carnival, etc. Also, the centre prepares varsity teams for competitions and holds extramural activities, e.g., the XJTLU International Sports Tournament.

FACILITIES


The sports complex provides fields and facilities for over 20 sports, including regular ones (e.g., basketball, badminton, table tennis, fitness, etc.) and featured sports (e.g., climbing, golf, fencing, archery, etc.).

CONTACTS

On-site: Sports Centre GM102
Phone: 0512-81889074
E-mail: Sports.Centre@xjtlu.edu.cn

UNIVERSITY SERVICE STATIONS

The first step towards success is Knowing how to obtain resources and supports initiatively.

 XJTLU SERVICE	STUDENT DEVELOPMENT ADVISING CENTRE ☒ SDA@xjtlu.edu.cn	ONE-STOP STUDENT SERVICE CENTRE ☎ 0512-88161854 ☒ onestop@xjtlu.edu.cn
	STUDENT ACCOMMODATION COMMITTEE ☎ 0512-88161857 ☒ accommodation@xjtlu.edu.cn	STUDENT COUNSELLING CENTRE ☎ 0512-88161815 ☒ counselling@xjtlu.edu.cn

CAREER CENTRE

☎ 0512-81888308
 ☒ careers@xjtlu.edu.cn
 🌐 <http://careers.xjtlu.edu.cn/>



IT SERVICE

☎ 0512-88161250
 ☒ IT-Service@xjtlu.edu.cn



BUDDY PROGRAMME

☎ 0512-81883293
 ☒ buddy@xjtlu.edu.cn



ALUMNI SERVICE

☎ 0512-88161869, 88161853
 ☒ alumni@xjtlu.edu.cn



STUDENT ORGANIZATION AND SUPPORT

☎ 0512-81884069
 ☒ scs@xjtlu.edu.cn



REGISTRY SERVICES AND SUPPORT

☎ 0512-88161230
 ☒ academicservices@xjtlu.edu.cn

PHYSICAL EDUCATION CENTRE

☒ PEC@xjtlu.edu.cn